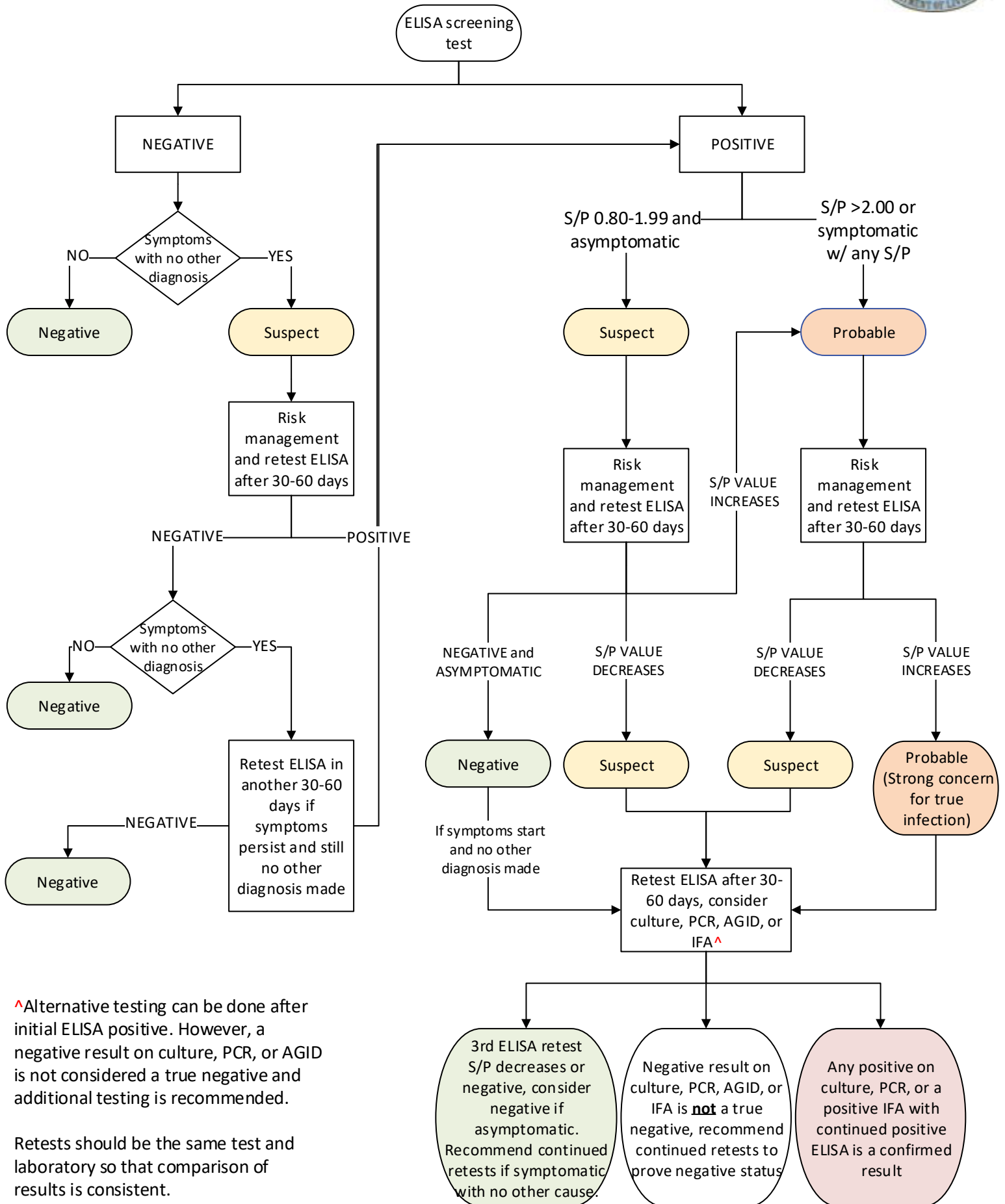


# Brucella canis Screening Test: ELISA Interpretation with Case Definitions for Veterinarians

Last updated October 2023



^Alternative testing can be done after initial ELISA positive. However, a negative result on culture, PCR, or AGID is not considered a true negative and additional testing is recommended.

Retests should be the same test and laboratory so that comparison of results is consistent.

# ***Brucella canis* Case Definitions, Diagnostic Test Interpretation, and Management Recommendations**

## **Suspect**

Screening test with the following criteria:

- Positive ELISA S/P 0.800-1.999 without symptoms
- Positive IFA 1:50 without symptoms
- Positive Multiplex without symptoms
- Negative screening test in a symptomatic dog when an alternative diagnosis cannot be determined

Management: Isolate and retest after 30-60 days

## **Probable**

Positive screening test with the following criteria:

- Positive ELISA with symptoms OR S/P >2.000 with/without symptoms
- Positive IFA 1:50 with symptoms or 1:200 with/without symptoms
- Positive Multiplex and AGID with/without symptoms
- Asymptomatic dog with increasing titers

Management: Isolate and retest after 30-60 days

- Euthanasia is an acceptable option

## **Confirmed**

Definitive laboratory test positive with/without symptoms

- Positive Culture
- Positive PCR

Management: Euthanasia strongly recommended

- Alternative option: lifelong quarantine, spay/neuter, and adhere to Prevention and Control Guidelines

When unclear on diagnosis or next step, consider any positive result as active infection, quarantine in the home, recommend spay/neuter, and retest with ELISA after 30-60 days and/or offer confirmatory testing option.